

FINOTECH® FSBR Baker Rod

Installation Instructions



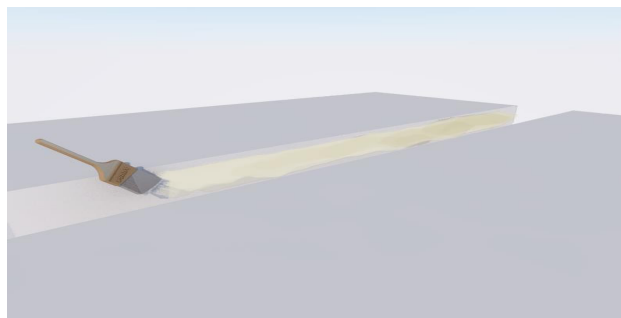
- 1.) Remove all used and old insulation in the dilatation element and clean old concrete fragments on both sides.

Note: both sides of dilatation element must be completely dry and dust free, if not - there is a risk of inappropriate installation

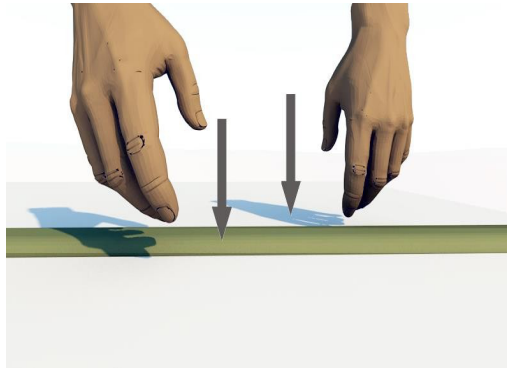
- 2.) Apply non-combustible adhesive to (recommended FINOTECH® SQ-690) the proper height (same distance as insulation ropediameter is) on both sides of the dilatation element.

*to choose appropriate FINOTECH® FSBR diameter considering the gap in the dilatation element, please refer to the table below.

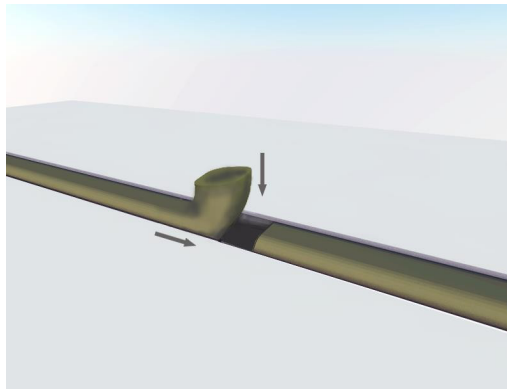
** the adhesive usage is not mandatory and it depends on the application of the ropes (please contact FINOTECH Switzerland AG)



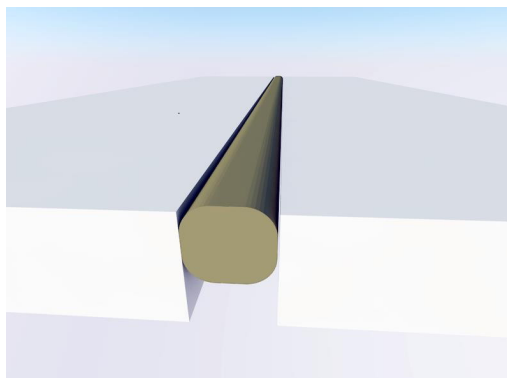
- 3.) Insert into the dilatation element and make sure it completely fits the part to which the adhesive is applied.



- 4.) Make sure that endings of both ropes are installed one to another.



- 5.) End of installation. Adhesive in the dilatation element is completely dry after 24 hours.



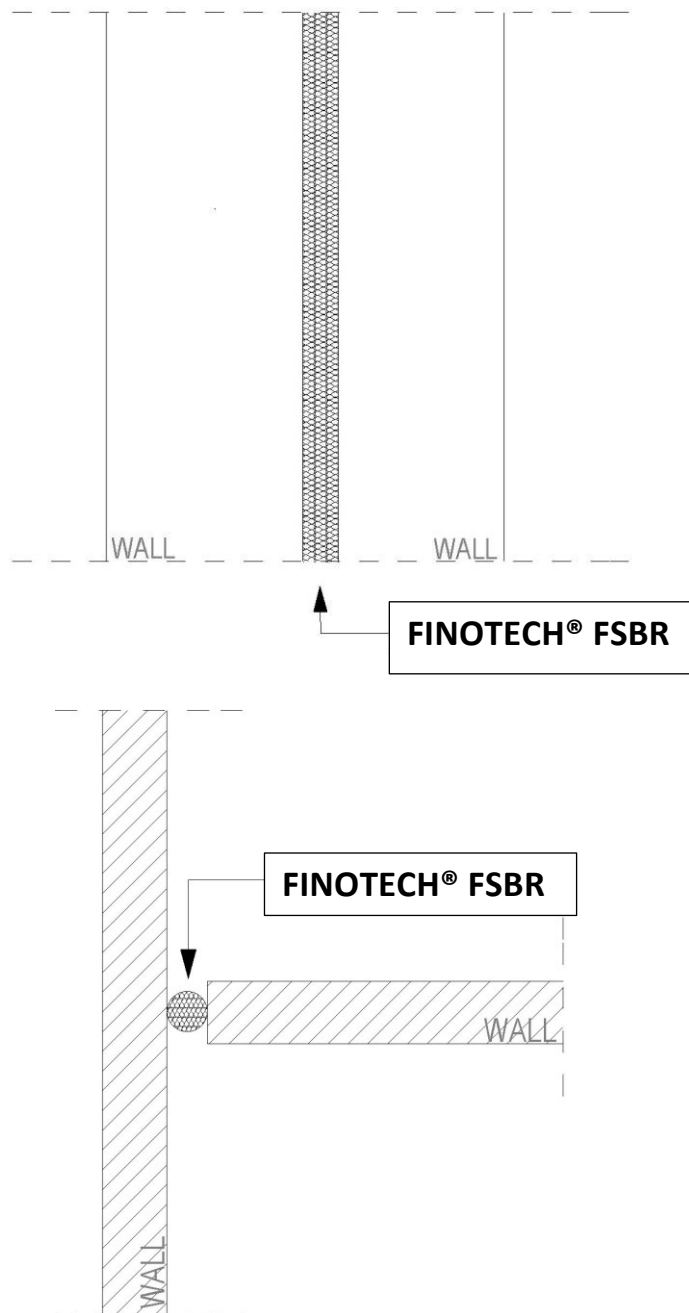
Recommendation table per joint type:

<i>Opening gap width (in mm)</i>	<i>FINOTECH FSBR diameter (in mm)</i>
10	20
15	25
20	30
25	35
30	40
40	50
50	60
60	70
70	80
80	90
90	100
100	120
110	130
120	140
130	150
140	160
150	180

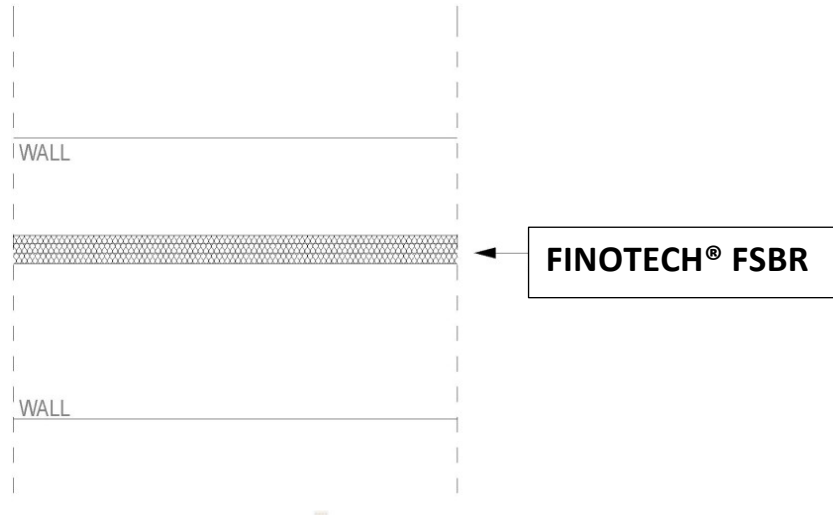
Installation Applications

1. JOINTS CONNECTING VERTICAL CONSTRUCTION PARTS:

a. WALL -> WALL CONNECTION (VERTICAL INSTALLATION OF FINOTECH® FSBR)

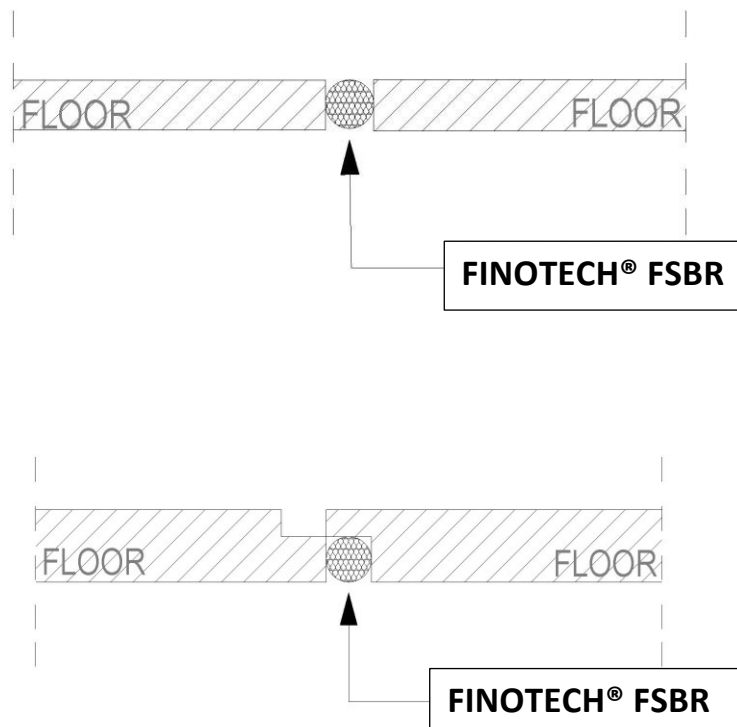


a. WALL -> WALL CONNECTION (HORIZONTAL INSTALLATION OF FINOTECH® FSBR)



2. JOINTS CONNECTING HORIZONTAL CONSTRUCTION PARTS:

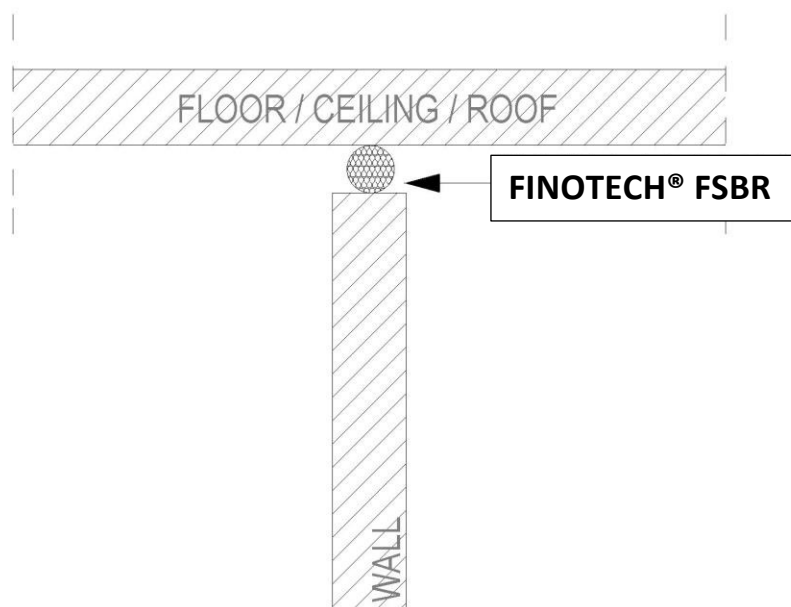
a. **FLOOR -> FLOOR CONNECTION (HORIZONTAL INSTALLATION OF FINOTECH® FSBR)**



[Hier eingeben]

3. JOINTS CONNECTING VERTICAL AND HORIZONTAL CONSTRUCTION PARTS:

a. **WALL -> FLOOR/CEILING/ROOF CONNECTION** (HORIZONTAL INSTALLATION OF FINOTECH® FSBR)



b. **FLOOR -> WALL CONNECTION** (HORIZONTAL INSTALLATION OF FINOTECH® FSBR)

